

Now & Then



KATHY F. ATKINSON

UNIVERSITY ARCHIVES PRESERVES CAMPUS HISTORY AND TREASURES

Now and Then, the University of Delaware 2007 Engagement Calendar, could not have been produced without the assistance of University Archives, the historical heart of the University.



Located in Pearson Hall, University Archives includes a team of five, headed by UD graduate Jean Brown, director of records management and archival services. Archives, which maintains University records, publications, memorabilia, and University-owned art work, also fields thousands of requests a year for information about the University from on and off the campus.

Faculty, staff, students, administrators, alumni and anyone else interested in the University's past come to Archives for help on different projects.

Requests have come from as far away as Japan, India and Poland, thanks to e-mail. When the late John Munroe, H. Rodney Sharp Professor Emeritus of History, wrote his 1986 book, *The University of Delaware: A History*, he established an office in the Archives to carry out his research, where he had a desk.

Assitant Archivist Ian Janssen, a UD graduate with an anthropology, history and library background, fields many of the archival research requests. Some of the most asked about topics, he says, are UD's study-abroad program, documents related to desegregation during the 1950s and the University's architecture. Archives has many of the original blueprints of buildings on The Green, which were designed by the firm of Day & Klauder, as well as Marian Cruger Coffin's original landscaping plans.

The Archives' web site [www.udel.edu/Archives] includes links to a wide range of essential and esoteric information about UD, including:

- "Significant Dates in UD History" provides a chronology of major events since the founding in 1743 of Francis Alison's Free School in New London, Pa.;
- "UD Firsts" offers a synopsis of milestones, including the fact that grade point averages were first used in the fall of 1923;
- "The Presidents" lists UD presidents, with photos and signatures, beginning with Eliphalet Wheeler Gilbert, 1834-35; and
- "Foreign Study Plan" details the history of the establishment of the first American study abroad program at UD in the 1920s.

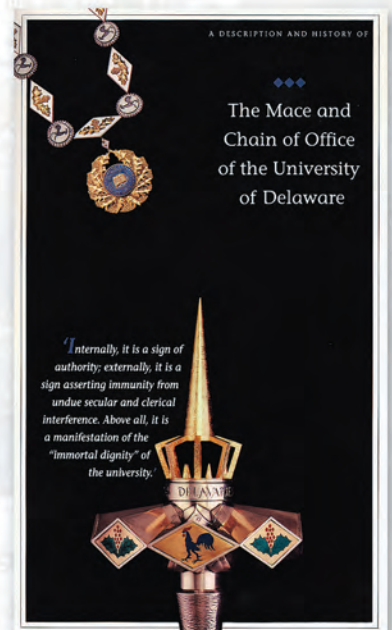
Bound copies of *UpDate*, the *Messenger*, press releases and *The Review* are available in Archives and are frequently in use.

Some of the Archives' holdings can be a trip down memory lane—dance cards, yearbooks, spades used for ground breakings, old Marching Band uniforms complete with hats, ceremonial academic gowns no longer used, publications and materials from literary societies, forerunners of Greek organizations on campus, and more.

Archives is also the custodian of Women's College scrapbooks, which were assembled by Emalea Pusey Warner, who worked hard to establish the college and for whom Warner Hall is named.

UD's Permanent Collection of works of art located throughout the campus is another responsibility. Archives photographs, catalogs, inventories and cares for the more than 1,700 items in the Permanent Collection. In addition, the University's mace

The University's Mace and Chain are kept by Archives until needed for ceremonial occasions.





Landing of the DeVries Colony at Swaanendael, Lewes, Delaware, 1631 by Stanley Arthurs. Courtesy of the Permanent Collection of the University of Delaware.

and chain, which are used solely for ceremonial occasions, are in its keeping.

Another focus of Archives is its University-wide records management program, which includes records retention schedules that have been developed for all University departments, a vital records program, records destruction and annual records management auditing. The program also includes an inactive records center, which houses records that have not yet satisfied their business value to the University, but are no longer needed on a day-to-day basis by University departments. Some 12,605 boxes of records are stored off campus, and, last year, 1,894 boxes full of documents were shredded.

Current vital records on personnel and early student records are kept in a large vault, which was formerly a bomb shelter in Pearson Hall. The vault is equipped with a halon system for protection against fire.

Archives was established in 1969 and located in the lower level of the Morris Library and later in a building on East Delaware Avenue before moving to its present home. "When Archives was first established, it was like going through an old family home—collecting records and items from attics, closets and basements," Brown says.

Now, thanks to a team effort, Archives has become modernized, computerized and the guardian of the University's treasures and its past. ♦



The University of Delaware is one of the nation's outstanding institutions of higher education, boasting a brilliant history of achievement and a proud tradition of excellence in service to the state, the region and the nation.

Through its first 263 years, the University has proven itself to be a dynamic and multi-faceted place dedicated to preparing young men and women for leadership through education, research and outreach.

Our campus, once described in the Princeton Review as "absolutely the most gorgeous campus anywhere," provides students the latest in facilities and technology to learn about the arts, about the sciences and about themselves. And we believe that with the completion of the original plan for The Green, the renovation of historic structures and the construction of new buildings in the traditional Georgian style, the University binds the generations as one.

This year's engagement calendar revisits the exciting journey of discovery and advancement that has been enjoyed by the University of Delaware as it has taken its place among the finest of the nation's public universities.

As you leaf through the pages, you will find photographs from bygone days contrasted with modern images, from libraries to laboratories, from dining halls to residence halls, from theatre to Fightin' Blue Hens athletics.

Enjoy this glance at the University of Delaware, *Now and Then*, and perhaps in the year ahead you will have an opportunity to visit the campus for a firsthand look. ♦

Sincerely,

David P. Roselle
President



January '07

<i>December '06</i>							<i>January</i>							<i>February</i>							
S	M	T	W	T	F	S	S	M	T	W	T	F	S	S	M	T	W	T	F	S	
					1	2		1	2	3	4	5	6						1	2	3
3	4	5	6	7	8	9	7	8	9	10	11	12	13	4	5	6	7	8	9	10	
10	11	12	13	14	15	16	14	15	16	17	18	19	20	11	12	13	14	15	16	17	
17	18	19	20	21	22	23	21	22	23	24	25	26	27	18	19	20	21	22	23	24	
24	25	26	27	28	29	30	28	29	30	31				25	26	27	28				

1 MONDAY

6 SATURDAY

New Year's Day

Winter Commencement

2 TUESDAY

7 SUNDAY

3 WEDNESDAY

Winter Session classes begin.

4 THURSDAY

5 FRIDAY



LEFT: View of South College Avenue today near the intersection with Delaware Avenue.

RIGHT: South College Avenue around 1900 near the site that would become the Women's College.



January

December '06							January							February								
S	M	T	W	T	F	S	S	M	T	W	T	F	S	S	M	T	W	T	F	S		
					1	2			1	2	3	4	5	6						1	2	3
3	4	5	6	7	8	9	7	8	9	10	11	12	13	4	5	6	7	8	9	10		
10	11	12	13	14	15	16	14	15	16	17	18	19	20	11	12	13	14	15	16	17		
17	18	19	20	21	22	23	21	22	23	24	25	26	27	18	19	20	21	22	23	24		
24	25	26	27	28	29	30	28	29	30	31	25	26	27	28								
						31																

8 MONDAY

13 SATURDAY

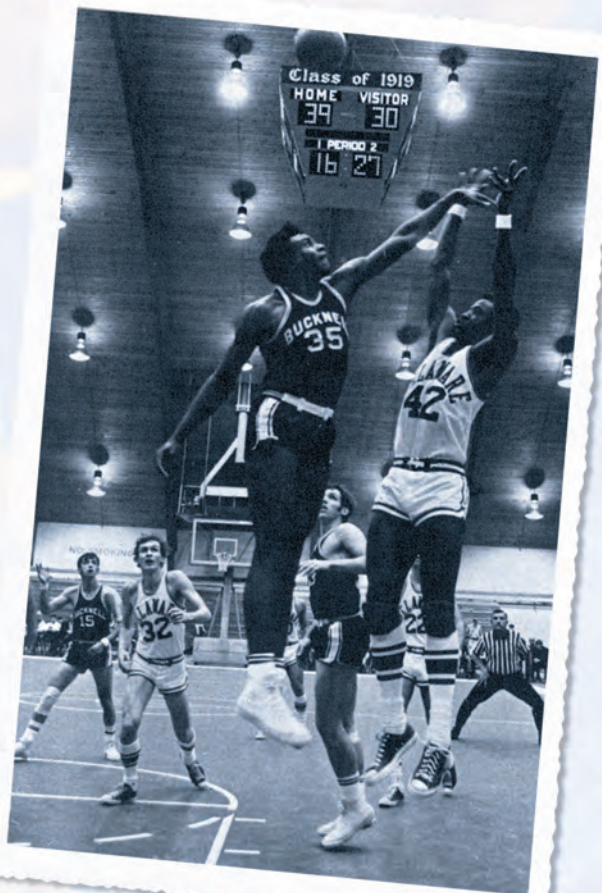
9 TUESDAY

14 SUNDAY

10 WEDNESDAY

11 THURSDAY

12 FRIDAY



RIGHT: Freshman basketball action was captured in the 1971 Blue Hen Yearbook.

LEFT: UD women play St. John's University in 2005 Women's National Invitation Tournament in the Bob Carpenter Center.



January

<i>December '06</i>							<i>January</i>							<i>February</i>								
S	M	T	W	T	F	S	S	M	T	W	T	F	S	S	M	T	W	T	F	S		
					1	2			1	2	3	4	5	6						1	2	3
3	4	5	6	7	8	9	7	8	9	10	11	12	13	4	5	6	7	8	9	10		
10	11	12	13	14	15	16	14	15	16	17	18	19	20	11	12	13	14	15	16	17		
17	18	19	20	21	22	23	21	22	23	24	25	26	27	18	19	20	21	22	23	24		
24	25	26	27	28	29	30	28	29	30	31	25	26	27	28								
						31																

15 MONDAY

20 SATURDAY

Martin Luther King Jr. Day

16 TUESDAY

21 SUNDAY

17 WEDNESDAY

18 THURSDAY

Spring Delaworld Phase 1

19 FRIDAY



JOHN COX

ABOVE: Students lunch with their parents at Kent Dining Hall during Freshman Family Weekend, September 2005.

LEFT: Students in the 1940s took turns serving meals in Kent Dining Hall.



January

December '06							January							February							
S	M	T	W	T	F	S	S	M	T	W	T	F	S	S	M	T	W	T	F	S	
					1	2	1	2	3	4	5	6							1	2	3
3	4	5	6	7	8	9	7	8	9	10	11	12	13	4	5	6	7	8	9	10	
10	11	12	13	14	15	16	14	15	16	17	18	19	20	11	12	13	14	15	16	17	
17	18	19	20	21	22	23	21	22	23	24	25	26	27	18	19	20	21	22	23	24	
24	25	26	27	28	29	30	28	29	30	31	25	26	27	28							

22 MONDAY

27 SATURDAY

23 TUESDAY

28 SUNDAY

24 WEDNESDAY

25 THURSDAY

26 FRIDAY



ABOVE: A 1905 postcard of Newark's Main Street depicts private homes and the First Presbyterian Church, a neo-Gothic structure built in 1868. The church was purchased in the early 1990s by the University, renovated and renamed Daugherty Hall.

LEFT: Daugherty Hall, a dominant architectural element of the Trabant University Center, is used today as a quiet study center and a site for special programs.



January February

December '06							January							February							
S	M	T	W	T	F	S	S	M	T	W	T	F	S	S	M	T	W	T	F	S	
					1	2	1	2	3	4	5	6						1	2	3	
3	4	5	6	7	8	9	7	8	9	10	11	12	13	4	5	6	7	8	9	10	
10	11	12	13	14	15	16	14	15	16	17	18	19	20	11	12	13	14	15	16	17	
17	18	19	20	21	22	23	21	22	23	24	25	26	27	18	19	20	21	22	23	24	
24	25	26	27	28	29	30	28	29	30	31	25	26	27	28							
						31															

29 MONDAY

3 SATURDAY

30 TUESDAY

4 SUNDAY

Winter Session exams

31 WEDNESDAY

1 THURSDAY

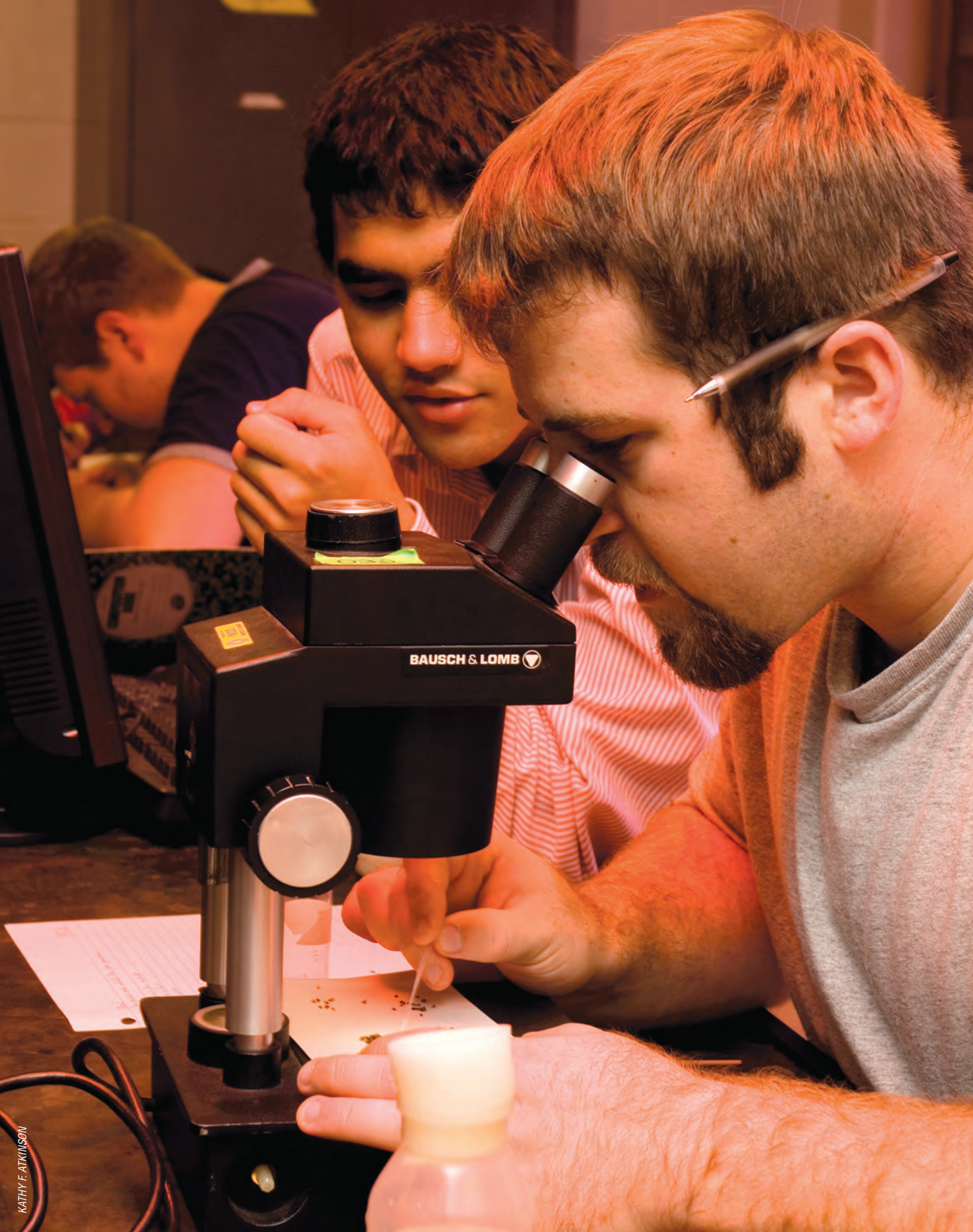
2 FRIDAY

*Winter Session classes end.
Groundhog Day*



ABOVE: Erected by the citizens of Delaware in memory of the Delawareans who lost their lives in World War I, Memorial Hall served as the University Library from 1924-63.

LEFT: After a major \$9.8 million renovation in 1999, Memorial Hall today houses the Department of English. It is listed on the National Register of Historic Places.



BAUSCH & LOMB

February

January							February							March							
S	M	T	W	T	F	S	S	M	T	W	T	F	S	S	M	T	W	T	F	S	
	1	2	3	4	5	6						1	2	3					1	2	3
7	8	9	10	11	12	13	4	5	6	7	8	9	10	4	5	6	7	8	9	10	11
14	15	16	17	18	19	20	11	12	13	14	15	16	17	11	12	13	14	15	16	17	18
21	22	23	24	25	26	27	18	19	20	21	22	23	24	18	19	20	21	22	23	24	25
28	29	30	31				25	26	27	28				25	26	27	28	29	30	31	

5 MONDAY

10 SATURDAY

Spring Semester classes begin.
Spring Delaworld Phase II

6 TUESDAY

11 SUNDAY

7 WEDNESDAY

8 THURSDAY

9 FRIDAY



ABOVE: Marine Science Camp was held at the University's Bayside Laboratory in Lewes, 1962.

LEFT: Students in an advanced genetics class in McKinly Laboratory separate out mutant *Drosophila* fruit flies using a dissection microscope.



MELVA B. GUTHRIE ATRIUM

February

January

S	M	T	W	T	F	S
	1	2	3	4	5	6
7	8	9	10	11	12	13
14	15	16	17	18	19	20
21	22	23	24	25	26	27
28	29	30	31			

February

S	M	T	W	T	F	S
				1	2	3
4	5	6	7	8	9	10
11	12	13	14	15	16	17
18	19	20	21	22	23	24
25	26	27	28			

March

S	M	T	W	T	F	S	
					1	2	3
4	5	6	7	8	9	10	
11	12	13	14	15	16	17	
18	19	20	21	22	23	24	
25	26	27	28	29	30	31	

12 MONDAY

17 SATURDAY

Lincoln's Birthday

13 TUESDAY

18 SUNDAY

Chinese New Year

14 WEDNESDAY

Valentine's Day

15 THURSDAY

16 FRIDAY



ABOVE: In 1909, Delaware College Library was located on the upper floor of Recitation Hall. In 1924, the library was moved to Memorial Hall.

LEFT: Constructed in 1963, Morris Library was named for alumnus Judge Hugh Martin Morris, Class of 1896, who was a member of the Board of Trustees for 30 years. In 1985-86, a \$14 million addition to the library doubled the space for books and readers. The atrium on the second and third floors features a skylight and vaulted ceilings.



February

January

S	M	T	W	T	F	S
	1	2	3	4	5	6
7	8	9	10	11	12	13
14	15	16	17	18	19	20
21	22	23	24	25	26	27
28	29	30	31			

February

S	M	T	W	T	F	S
				1	2	3
4	5	6	7	8	9	10
11	12	13	14	15	16	17
18	19	20	21	22	23	24
25	26	27	28			

March

S	M	T	W	T	F	S	
					1	2	3
4	5	6	7	8	9	10	
11	12	13	14	15	16	17	
18	19	20	21	22	23	24	
25	26	27	28	29	30	31	

19 MONDAY

24 SATURDAY

Presidents Day

20 TUESDAY

25 SUNDAY

21 WEDNESDAY

Ash Wednesday

22 THURSDAY

Washington's Birthday

23 FRIDAY



ABOVE: Students use tape recordings to study foreign languages.

LEFT: The Foreign Language Media Center today in Jastak-Burgess Hall offers 32 seats for computer-based learning, from video viewing to web and CD-ROM multimedia presentations.



February March

January							February							March							
S	M	T	W	T	F	S	S	M	T	W	T	F	S	S	M	T	W	T	F	S	
	1	2	3	4	5	6				1	2	3							1	2	3
7	8	9	10	11	12	13	4	5	6	7	8	9	10	4	5	6	7	8	9	10	
14	15	16	17	18	19	20	11	12	13	14	15	16	17	11	12	13	14	15	16	17	
21	22	23	24	25	26	27	18	19	20	21	22	23	24	18	19	20	21	22	23	24	
28	29	30	31				25	26	27	28				25	26	27	28	29	30	31	

26 MONDAY

3 SATURDAY

27 TUESDAY

4 SUNDAY

28 WEDNESDAY

1 THURSDAY

2 FRIDAY



ABOVE: In 1920, the temporary Electrical Engineering Building occupied the future site of Sharp Hall.

LEFT: Sharp Hall, a residence hall, was named in honor of H. Rodney Sharp, Class of 1900. Sharp was a member of the Board of Trustees from 1915-68.



March

February

S	M	T	W	T	F	S
					1	2 3
4	5	6	7	8	9	10
11	12	13	14	15	16	17
18	19	20	21	22	23	24
25	26	27	28			

March

S	M	T	W	T	F	S
					1	2 3
4	5	6	7	8	9	10
11	12	13	14	15	16	17
18	19	20	21	22	23	24
25	26	27	28	29	30	31

April

S	M	T	W	T	F	S
						1
2	3	4	5	6	7	
8	9	10	11	12	13	14
15	16	17	18	19	20	21
22	23	24	25	26	27	28
29	30					

5 MONDAY

10 SATURDAY

6 TUESDAY

11 SUNDAY

7 WEDNESDAY

8 THURSDAY

9 FRIDAY

Daylight-saving time begins.



ABOVE: Television in the residence halls was a big innovation in the 1960s.

LEFT: Movies now are shown outdoors on The Green on special occasions. Here students watch X-Men 3: The Last Stand in September.



KEITH W. HECKERT

March

<i>February</i>							<i>March</i>							<i>April</i>						
S	M	T	W	T	F	S	S	M	T	W	T	F	S	S	M	T	W	T	F	S
					1	2	3							1	2	3	4	5	6	7
4	5	6	7	8	9	10	4	5	6	7	8	9	10	8	9	10	11	12	13	14
11	12	13	14	15	16	17	11	12	13	14	15	16	17	15	16	17	18	19	20	21
18	19	20	21	22	23	24	18	19	20	21	22	23	24	22	23	24	25	26	27	28
25	26	27	28				25	26	27	28	29	30	31	29	30					

12 MONDAY

17 SATURDAY

13 TUESDAY

18 SUNDAY

St. Patrick's Day

14 WEDNESDAY

15 THURSDAY

16 FRIDAY



ABOVE: The Academy Building on Main Street originally housed students of the Academy of Newark, the parent of Newark College that eventually grew into the University of Delaware.

LEFT: After serving consecutively as Newark's high school, library and town hall, the Academy Building was given to the University in 1976. Restored and renovated, it houses the Office of Public Relations today.



DUANE PERRY

Today, in addition to singing classes, there are several a cappella student groups. In September 2005, several of these groups performed at the Scrounge in a concert called "Voices Against Hunger."

March

February							March							April						
S	M	T	W	T	F	S	S	M	T	W	T	F	S	S	M	T	W	T	F	S
					1	2	3						1	2	3	4	5	6	7	
4	5	6	7	8	9	10	11	12	13	14	15	16	17	18	19	20	21	22	23	24
25	26	27	28				1	2	3	4	5	6	7	8	9	10	11	12	13	14
							15	16	17	18	19	20	21	22	23	24	25	26	27	28
							29	30	31											

19 MONDAY

24 SATURDAY

20 TUESDAY

25 SUNDAY

21 WEDNESDAY

First day of spring

22 THURSDAY

23 FRIDAY

Spring recess begins after last sceduled class.



Dean of American composers Aaron Copland conducts a rehearsal of the University's concert choir during UD's 12th annual Festival of Contemporary Music in 1961.



BAYARD SHARP
HALL

March April

26 MONDAY

27 TUESDAY

28 WEDNESDAY

29 THURSDAY

30 FRIDAY

<i>February</i>							<i>March</i>							<i>April</i>						
S	M	T	W	T	F	S	S	M	T	W	T	F	S	S	M	T	W	T	F	S
					1	2	3						1	2	3	4	5	6	7	
4	5	6	7	8	9	10	4	5	6	7	8	9	10	8	9	10	11	12	13	14
11	12	13	14	15	16	17	11	12	13	14	15	16	17	15	16	17	18	19	20	21
18	19	20	21	22	23	24	18	19	20	21	22	23	24	22	23	24	25	26	27	28
25	26	27	28				25	26	27	28	29	30	31	29	30					

31 SATURDAY

1 SUNDAY



ABOVE: This sketch of St. Thomas Episcopal Church was made in 1844, one year after the church was built.

LEFT: Acquired by the University in 1997, St. Thomas Church was restored with funds provided by Bayard Sharp, a longtime friend of the University. Used today for concerts and lectures, Bayard Sharp Hall houses a reconditioned 1900 Steinway piano and the Edward and Naomi Jefferson Pipe Organ, a custom-built 1,234-pipe organ.



April

March							April							May							
S	M	T	W	T	F	S	S	M	T	W	T	F	S	S	M	T	W	T	F	S	
				1	2	3	1	2	3	4	5	6	7				1	2	3	4	5
4	5	6	7	8	9	10	8	9	10	11	12	13	14	6	7	8	9	10	11	12	
11	12	13	14	15	16	17	15	16	17	18	19	20	21	13	14	15	16	17	18	19	
18	19	20	21	22	23	24	22	23	24	25	26	27	28	20	21	22	23	24	25	26	
25	26	27	28	29	30	31	29	30						27	28	29	30	31			

2 MONDAY

7 SATURDAY

Classes resume after spring recess.

3 TUESDAY

8 SUNDAY

Passover begins at sundown.

Easter

4 WEDNESDAY

5 THURSDAY

6 FRIDAY

Good Friday



ABOVE: The old walkway from the Laird Campus to the Ray Street complex had many steps and was difficult to use in winter months.

LEFT: The new pedestrian bridge has room for bicycles and foot traffic to travel to the main campus from residence halls named in honor of Thomas McKean, James Smith and George Read, all signers of the Declaration of Independence.

BOB HANNAH



ABOVE: The first team sport to be organized and play against off-campus teams was baseball in the 1870s. Shown here is UD's "college nine" in 1904 with their coaches and managers.

RIGHT: Dan Richardson of UD's 2005 baseball team waits for his pitch at a home game in Bob Hannah Stadium against Delaware State University.

April

March							April							May						
S	M	T	W	T	F	S	S	M	T	W	T	F	S	S	M	T	W	T	F	S
				1	2	3	1	2	3	4	5	6	7	6	7	8	9	10	11	12
4	5	6	7	8	9	10	8	9	10	11	12	13	14	13	14	15	16	17	18	19
11	12	13	14	15	16	17	15	16	17	18	19	20	21	20	21	22	23	24	25	26
18	19	20	21	22	23	24	22	23	24	25	26	27	28	27	28	29	30	31		
25	26	27	28	29	30	31	29	30						29	30	31				

9 MONDAY

14 SATURDAY

10 TUESDAY

15 SUNDAY

Passover ends.

11 WEDNESDAY

12 THURSDAY

13 FRIDAY



JOSLYN BERGER



A dress code had an effect on what Delaware students and these exchange students wore in the '50s and '60s, but the code ceased to be mandatory by 1967.

April

March							April							May							
S	M	T	W	T	F	S	S	M	T	W	T	F	S	S	M	T	W	T	F	S	
				1	2	3	1	2	3	4	5	6	7				1	2	3	4	5
4	5	6	7	8	9	10	8	9	10	11	12	13	14	6	7	8	9	10	11	12	
11	12	13	14	15	16	17	15	16	17	18	19	20	21	13	14	15	16	17	18	19	
18	19	20	21	22	23	24	22	23	24	25	26	27	28	20	21	22	23	24	25	26	
25	26	27	28	29	30	31	29	30						27	28	29	30	31			

16 MONDAY

21 SATURDAY

17 TUESDAY

22 SUNDAY

18 WEDNESDAY

19 THURSDAY

20 FRIDAY

KATHY E. ATKINSON



Students visiting the campus in 2006 on a U.S. State Department program to introduce them to American culture have adopted the blue jeans, T-shirts, athletic shoes or flip-flops worn by today's students.



In the 1950s, Royal and Remington manual typewriters were still the leading edge of written communication.

April

March							April							May							
S	M	T	W	T	F	S	S	M	T	W	T	F	S	S	M	T	W	T	F	S	
				1	2	3	1	2	3	4	5	6	7				1	2	3	4	5
4	5	6	7	8	9	10	8	9	10	11	12	13	14	6	7	8	9	10	11	12	
11	12	13	14	15	16	17	15	16	17	18	19	20	21	13	14	15	16	17	18	19	
18	19	20	21	22	23	24	22	23	24	25	26	27	28	20	21	22	23	24	25	26	
25	26	27	28	29	30	31	29	30						27	28	29	30	31			

23 MONDAY

28 SATURDAY

24 TUESDAY

29 SUNDAY

25 WEDNESDAY

26 THURSDAY

27 FRIDAY



KATHY E. ATKINSON

Today's students have access to computer labs across campus, or they can use the wireless computer access points in Morris Library for writing papers and conducting database research.



April May

<i>March</i>							<i>April</i>							<i>May</i>						
S	M	T	W	T	F	S	S	M	T	W	T	F	S	S	M	T	W	T	F	S
				1	2	3	1	2	3	4	5	6	7			1	2	3	4	5
4	5	6	7	8	9	10	8	9	10	11	12	13	14	6	7	8	9	10	11	12
11	12	13	14	15	16	17	15	16	17	18	19	20	21	13	14	15	16	17	18	19
18	19	20	21	22	23	24	22	23	24	25	26	27	28	20	21	22	23	24	25	26
25	26	27	28	29	30	31	29	30						27	28	29	30	31		

30 MONDAY

5 SATURDAY

1 TUESDAY

6 SUNDAY

2 WEDNESDAY

3 THURSDAY

4 FRIDAY



ABOVE: Topsy, Turvey and Boletus, "temporary" residence halls at the Women's College, were built between 1920-23 and lasted until 1956.

LEFT: Squire Residence Hall, constructed in 1957, is named in memory of Francis Hagar Squire, UD professor of history, who was dean of the College of Arts and Sciences when he died in 1956.

Honors Day



May

<i>April</i>							<i>May</i>							<i>June</i>						
S	M	T	W	T	F	S	S	M	T	W	T	F	S	S	M	T	W	T	F	S
1	2	3	4	5	6	7				1	2	3	4	5					1	2
8	9	10	11	12	13	14	6	7	8	9	10	11	12	3	4	5	6	7	8	9
15	16	17	18	19	20	21	13	14	15	16	17	18	19	10	11	12	13	14	15	16
22	23	24	25	26	27	28	20	21	22	23	24	25	26	17	18	19	20	21	22	23
29	30						27	28	29	30	31			24	25	26	27	28	29	30

7 MONDAY

12 SATURDAY

8 TUESDAY

13 SUNDAY

9 WEDNESDAY

Mother's Day

10 THURSDAY



DUANE PERRY

ABOVE: Ag Day, held each spring on campus near Townsend Hall, features food, exhibits, entertainment, plant sales, farm tours, livestock displays, pony rides and children's activities.

11 FRIDAY

LEFT: Farmer's Day in the 1920s encouraged farmers and their wives from around the state to gather at UD's College Farm for demonstrations and tours.



May

<i>April</i>							<i>May</i>					<i>June</i>								
S	M	T	W	T	F	S	S	M	T	W	T	F	S	S	M	T	W	T	F	S
1	2	3	4	5	6	7		1	2	3	4	5							1	2
8	9	10	11	12	13	14	6	7	8	9	10	11	12	3	4	5	6	7	8	9
15	16	17	18	19	20	21	13	14	15	16	17	18	19	10	11	12	13	14	15	16
22	23	24	25	26	27	28	20	21	22	23	24	25	26	17	18	19	20	21	22	23
29	30						27	28	29	30	31			24	25	26	27	28	29	30

14 MONDAY

19 SATURDAY

15 TUESDAY

20 SUNDAY

16 WEDNESDAY

Reading Day

17 THURSDAY

Last day of classes

18 FRIDAY

Reading Day

Final exams begin.



ABOVE: Built in 1953, Alison Hall is named for the Rev. Dr. Francis Alison, a distinguished Colonial teacher and Presbyterian minister who founded the school to which UD traces its origin. Today, it houses the Laboratory Pre-school, the College School and the Center for Historic Architecture and Design.

LEFT: Alison Hall Annex, which was built in 1990, houses the departments of Individual and Family Studies and Fashion and Apparel Studies.



ERIC CROSSAN

May

<i>April</i>							<i>May</i>							<i>June</i>						
S	M	T	W	T	F	S	S	M	T	W	T	F	S	S	M	T	W	T	F	S
1	2	3	4	5	6	7				1	2	3	4	5					1	2
8	9	10	11	12	13	14	6	7	8	9	10	11	12	3	4	5	6	7	8	9
15	16	17	18	19	20	21	13	14	15	16	17	18	19	10	11	12	13	14	15	16
22	23	24	25	26	27	28	20	21	22	23	24	25	26	17	18	19	20	21	22	23
29	30						27	28	29	30	31			24	25	26	27	28	29	30

21 MONDAY

26 SATURDAY

22 TUESDAY

27 SUNDAY

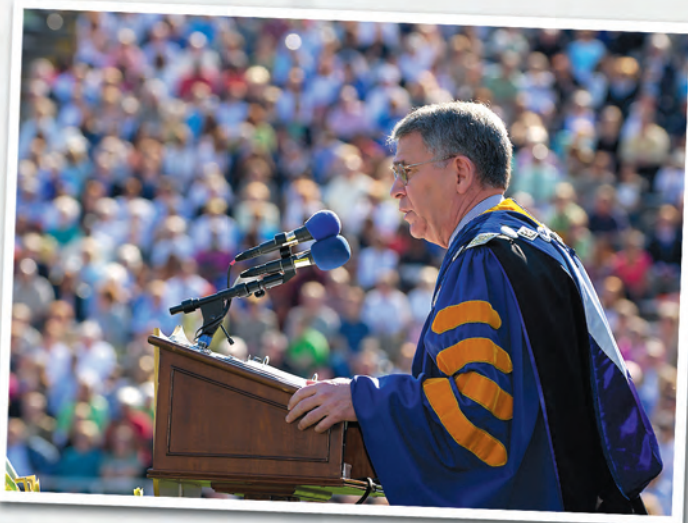
Spring Commencement

23 WEDNESDAY

24 THURSDAY

25 FRIDAY

Final exams end.



JON COX

ABOVE: During his tenure at the University, President David P. Roselle has hosted 17 Spring Commencements and awarded more than 70,000 degrees.

LEFT: At top, John Basset Moore, an American authority on international law and first U.S. judge to serve on the International Court of Justice, spoke at the 1916 Commencement. In 1984, the University began holding regular Winter Commencement ceremonies. At bottom, President E.A. Trabant officiates at the first ceremony in Clayton Hall.



DUANE PERRY

As enrollment increased, Commencement was moved to Delaware Stadium. In May 2006, nearly 5,400 degrees were awarded.

May/June

<i>April</i>							<i>May</i>					<i>June</i>								
S	M	T	W	T	F	S	S	M	T	W	T	F	S	S	M	T	W	T	F	S
1	2	3	4	5	6	7		1	2	3	4	5							1	2
8	9	10	11	12	13	14	6	7	8	9	10	11	12	3	4	5	6	7	8	9
15	16	17	18	19	20	21	13	14	15	16	17	18	19	10	11	12	13	14	15	16
22	23	24	25	26	27	28	20	21	22	23	24	25	26	17	18	19	20	21	22	23
29	30						27	28	29	30	31			24	25	26	27	28	29	30

28 MONDAY

2 SATURDAY

Memorial Day

29 TUESDAY

3 SUNDAY

30 WEDNESDAY

31 THURSDAY

1 FRIDAY



In May 1951, Commencement was held in front of Hullahen Hall, and 523 degrees were granted.



The class of 1954 wore freshman beanies.

June

May							June							July						
S	M	T	W	T	F	S	S	M	T	W	T	F	S	S	M	T	W	T	F	S
			1	2	3	4	5					1	2	3	4	5	6	7		
6	7	8	9	10	11	12	13	14	15	16	17	18	19	20	21	22	23	24	25	26
27	28	29	30	31			3	4	5	6	7	8	9	10	11	12	13	14	15	16
							17	18	19	20	21	22	23	24	25	26	27	28	29	30
							24	25	26	27	28	29	30	31						

4 MONDAY

9 SATURDAY

First summer session classes begin.

5 TUESDAY

10 SUNDAY

6 WEDNESDAY

7 THURSDAY

8 FRIDAY

TYLER JACOBSON



Now students check out the more than 170 registered student organizations on campus by attending Student Activity Night events in the Trabant University Center and the Carpenter Sports Building.



ABOVE: The train to Newark was important to UD students coming from Wilmington in the 1890s and 1900s.

RIGHT: Trains still stop in Newark, but many students now drive to campus.

June

<i>May</i>							<i>June</i>							<i>July</i>						
S	M	T	W	T	F	S	S	M	T	W	T	F	S	S	M	T	W	T	F	S
			1	2	3	4	5					1	2	1	2	3	4	5	6	7
6	7	8	9	10	11	12	13	14	15	16	17	18	19	3	4	5	6	7	8	9
20	21	22	23	24	25	26	27	28	29	30	31			10	11	12	13	14	15	16
														17	18	19	20	21	22	23
														24	25	26	27	28	29	30
														29	30	31				

11 MONDAY

16 SATURDAY

12 TUESDAY

17 SUNDAY

13 WEDNESDAY

Father's Day

14 THURSDAY

Flag Day

15 FRIDAY

SARAH M. SIMON





June

<i>May</i>							<i>June</i>							<i>July</i>							
S	M	T	W	T	F	S	S	M	T	W	T	F	S	S	M	T	W	T	F	S	
			1	2	3	4	5					1	2	1	2	3	4	5	6	7	
6	7	8	9	10	11	12		3	4	5	6	7	8	9	8	9	10	11	12	13	14
13	14	15	16	17	18	19		10	11	12	13	14	15	16	15	16	17	18	19	20	21
20	21	22	23	24	25	26		17	18	19	20	21	22	23	22	23	24	25	26	27	28
27	28	29	30	31				24	25	26	27	28	29	30	29	30	31				

18 MONDAY

23 SATURDAY

19 TUESDAY

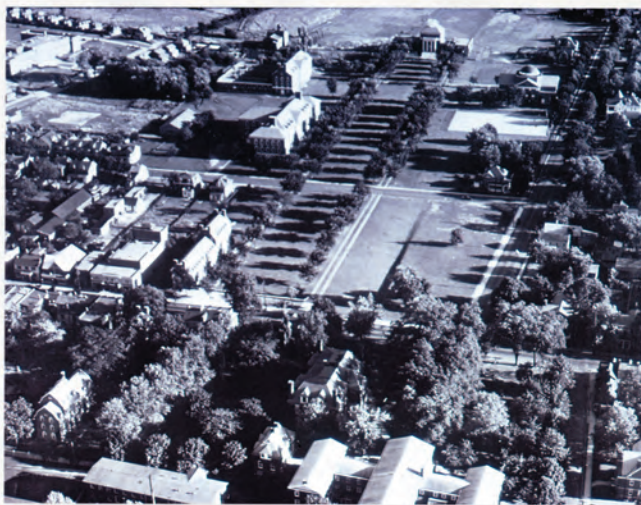
24 SUNDAY

20 WEDNESDAY

21 THURSDAY

First day of summer

22 FRIDAY



ABOVE: An earlier view of The Green from Memorial Hall (at top of photo) to Old College (in the foreground) shows far fewer buildings.

LEFT: A recent view of the north and south Green focuses on Memorial Hall and Magnolia Circle at top.



DUANE PERRY

In 1995, Taylor Hall underwent a \$2 million renovation, creating a state-of-the-art building with well-lit studios and classrooms for painting, drawing, photography and illustration.

June/July

<i>May</i>							<i>June</i>							<i>July</i>							
S	M	T	W	T	F	S	S	M	T	W	T	F	S	S	M	T	W	T	F	S	
			1	2	3	4	5					1	2	3	4	5	6	7			
6	7	8	9	10	11	12		3	4	5	6	7	8	9	8	9	10	11	12	13	14
13	14	15	16	17	18	19		10	11	12	13	14	15	16	15	16	17	18	19	20	21
20	21	22	23	24	25	26		17	18	19	20	21	22	23	22	23	24	25	26	27	28
27	28	29	30	31				24	25	26	27	28	29	30	29	30	31				

25 MONDAY

30 SATURDAY

26 TUESDAY

1 SUNDAY

27 WEDNESDAY

28 THURSDAY

29 FRIDAY



Named in honor of Trustee Alexander J. Taylor, Class of 1893, Taylor Hall was the only men's gymnasium on campus prior to 1942.



JON COX

The 146-foot Research Vessel Hugh R. Sharp joined the UD fleet in January 2006. With a modular design to enhance flexibility of use, the vessel features modern laboratories on board and the capacity to carry two additional portable laboratories.

July

June							July							August							
S	M	T	W	T	F	S	S	M	T	W	T	F	S	S	M	T	W	T	F	S	
					1	2	1	2	3	4	5	6	7					1	2	3	4
3	4	5	6	7	8	9	8	9	10	11	12	13	14	5	6	7	8	9	10	11	
10	11	12	13	14	15	16	15	16	17	18	19	20	21	12	13	14	15	16	17	18	
17	18	19	20	21	22	23	22	23	24	25	26	27	28	19	20	21	22	23	24	25	
24	25	26	27	28	29	30	29	30	31					26	27	28	29	30	31		

2 MONDAY

7 SATURDAY

3 TUESDAY

8 SUNDAY

5-week summer session final exams

4 WEDNESDAY

Independence Day

5 THURSDAY

6 FRIDAY

5-week summer session classes end.



The R/V Cape Henlopen had been in continuous service to the oceanographic community since 1976, averaging 180 days a year at sea.



*Dramatic clubs at UD began with the Mask and Wig Club in 1902, included many Shakespearean performances in the 1920s and continue today with E-52 Players, which was formed in 1931, and Harrington Theatre Arts Company. Wolf Hall auditorium was the setting for many of these performances. Shown here in front of Wolf Hall are cast members in Shakespeare's *Midsummer Night's Dream*, performed in 1920.*

July

June							July							August						
S	M	T	W	T	F	S	S	M	T	W	T	F	S	S	M	T	W	T	F	S
					1	2	1	2	3	4	5	6	7				1	2	3	4
3	4	5	6	7	8	9	8	9	10	11	12	13	14	5	6	7	8	9	10	11
10	11	12	13	14	15	16	15	16	17	18	19	20	21	12	13	14	15	16	17	18
17	18	19	20	21	22	23	22	23	24	25	26	27	28	19	20	21	22	23	24	25
24	25	26	27	28	29	30	29	30	31					26	27	28	29	30	31	

9 MONDAY

14 SATURDAY

Second summer session classes begin.

10 TUESDAY

15 SUNDAY

11 WEDNESDAY

12 THURSDAY

13 FRIDAY



Members of the Professional Theatre Training Program practice Peter Pan in the new Center for the Arts building that opened in 2006.

JON COX



DUANE PERRY

Two youngsters meet at Ag Day in the spring.

July

<i>June</i>							<i>July</i>							<i>August</i>						
S	M	T	W	T	F	S	S	M	T	W	T	F	S	S	M	T	W	T	F	S
					1	2	1	2	3	4	5	6	7			1	2	3	4	
3	4	5	6	7	8	9	8	9	10	11	12	13	14	5	6	7	8	9	10	11
10	11	12	13	14	15	16	15	16	17	18	19	20	21	12	13	14	15	16	17	18
17	18	19	20	21	22	23	22	23	24	25	26	27	28	19	20	21	22	23	24	25
24	25	26	27	28	29	30	29	30	31					26	27	28	29	30	31	

16 MONDAY

21 SATURDAY

17 TUESDAY

22 SUNDAY

18 WEDNESDAY

19 THURSDAY

20 FRIDAY



Students in agriculture learn to shear sheep around 1913.





July

June							July							August						
S	M	T	W	T	F	S	S	M	T	W	T	F	S	S	M	T	W	T	F	S
					1	2	1	2	3	4	5	6	7			1	2	3	4	
3	4	5	6	7	8	9	8	9	10	11	12	13	14	5	6	7	8	9	10	11
10	11	12	13	14	15	16	15	16	17	18	19	20	21	12	13	14	15	16	17	18
17	18	19	20	21	22	23	22	23	24	25	26	27	28	19	20	21	22	23	24	25
24	25	26	27	28	29	30	29	30	31					26	27	28	29	30	31	

23 MONDAY

28 SATURDAY

7 1/2-week summer session classes meeting Mon./Wed. end.

24 TUESDAY

29 SUNDAY

7 1/2-week summer session classes meeting Tues./Thurs. end.

25 WEDNESDAY

7 1/2-week summer session classes meeting Mon./Wed. final exams

26 THURSDAY

7 1/2-week summer session classes meeting Tues./Thurs. final exams

27 FRIDAY



ABOVE: Elizabeth Dyer, center, a well-known professor of chemistry who joined the Women's College in 1933 and remained involved on the campus well past her retirement in 1971, was praised by her many students, including Nobel-Prize winner, Daniel Nathan, who graduated in 1950.

LEFT: Students shown participating in a medical technology lab for upperclassmen in 2006.



KATHY F. ATKINSON

July/August

July							August							September						
S	M	T	W	T	F	S	S	M	T	W	T	F	S	S	M	T	W	T	F	S
1	2	3	4	5	6	7				1	2	3	4							1
8	9	10	11	12	13	14	5	6	7	8	9	10	11	2	3	4	5	6	7	8
15	16	17	18	19	20	21	12	13	14	15	16	17	18	9	10	11	12	13	14	15
22	23	24	25	26	27	28	19	20	21	22	23	24	25	16	17	18	19	20	21	22
29	30	31					26	27	28	29	30	31		23	24	25	26	27	28	29
														30						

30 MONDAY

4 SATURDAY

31 TUESDAY

5 SUNDAY

1 WEDNESDAY

2 THURSDAY

3 FRIDAY



ABOVE: Computers in the 1960s used magnetic tapes to store information before the floppy disk was introduced.

LEFT: Chemistry professor Murray Johnston and grad students use a spectrometer to analyze Wilmington air, as part of an EPA-funded research project.



August

July							August							September						
S	M	T	W	T	F	S	S	M	T	W	T	F	S	S	M	T	W	T	F	S
1	2	3	4	5	6	7				1	2	3	4							1
8	9	10	11	12	13	14	5	6	7	8	9	10	11	2	3	4	5	6	7	8
15	16	17	18	19	20	21	12	13	14	15	16	17	18	9	10	11	12	13	14	15
22	23	24	25	26	27	28	19	20	21	22	23	24	25	16	17	18	19	20	21	22
29	30	31					26	27	28	29	30	31		23	24	25	26	27	28	29
																				30

6 MONDAY

11 SATURDAY

7 TUESDAY

12 SUNDAY

8 WEDNESDAY

9 THURSDAY

Second summer session classes end.

10 FRIDAY

Second summer session final exams



ABOVE: A cooking class in 1914 in the Women's College emphasized nutrition.

LEFT: Hotel, restaurant and institutional management students learn the restaurant business at Vita Nova, the award-winning student-run restaurant in the Trabant University Center.



August

July							August							September						
S	M	T	W	T	F	S	S	M	T	W	T	F	S	S	M	T	W	T	F	S
1	2	3	4	5	6	7			1	2	3	4								1
8	9	10	11	12	13	14	5	6	7	8	9	10	11	2	3	4	5	6	7	8
15	16	17	18	19	20	21	12	13	14	15	16	17	18	9	10	11	12	13	14	15
22	23	24	25	26	27	28	19	20	21	22	23	24	25	16	17	18	19	20	21	22
29	30	31					26	27	28	29	30	31		23	24	25	26	27	28	29
														30						

13 MONDAY

18 SATURDAY

14 TUESDAY

19 SUNDAY

15 WEDNESDAY

16 THURSDAY

17 FRIDAY



ABOVE: A soils class in 1934 was held in Wolf Hall.

LEFT: Balaji Panchapakesan, assistant professor of electrical and computer engineering, and his colleagues have developed a promising method of cancer detection and treatment using laser light and carbon nanotubes.



ABOVE: In the '50s and '60s, students waited in line at the Carpenter Sports Building to register for classes.

RIGHT: Today, UD students apply for classes online. They can drop and add courses, get their IDs and parking permits, pay fees and request a transcript at the Student Services Building, which opened in 1992.

August

July							August							September						
S	M	T	W	T	F	S	S	M	T	W	T	F	S	S	M	T	W	T	F	S
1	2	3	4	5	6	7			1	2	3	4								1
8	9	10	11	12	13	14	5	6	7	8	9	10	11	2	3	4	5	6	7	8
15	16	17	18	19	20	21	12	13	14	15	16	17	18	9	10	11	12	13	14	15
22	23	24	25	26	27	28	19	20	21	22	23	24	25	16	17	18	19	20	21	22
29	30	31					26	27	28	29	30	31		23	24	25	26	27	28	29
														30						

20 MONDAY

25 SATURDAY

21 TUESDAY

26 SUNDAY

22 WEDNESDAY

23 THURSDAY

24 FRIDAY



KATHY F. ATKINSON



First-year students wearing their freshman beanies look around the bookstore in 1962.

August September

July							August							September						
S	M	T	W	T	F	S	S	M	T	W	T	F	S	S	M	T	W	T	F	S
1	2	3	4	5	6	7	1	2	3	4										1
8	9	10	11	12	13	14	5	6	7	8	9	10	11	2	3	4	5	6	7	8
15	16	17	18	19	20	21	12	13	14	15	16	17	18	9	10	11	12	13	14	15
22	23	24	25	26	27	28	19	20	21	22	23	24	25	16	17	18	19	20	21	22
29	30	31					26	27	28	29	30	31		23	24	25	26	27	28	29
														30						

27 MONDAY

1 SATURDAY

New Student Convocation

28 TUESDAY

2 SUNDAY

Fall semester classes begin at 8 a.m.

29 WEDNESDAY

30 THURSDAY

31 FRIDAY



SARAH M. SIMON

UD's Bookstore today sells a variety of items from spirit wear to computers, in addition to popular books and textbooks.



A few triple rooms were found on campus in the 1950s. This one in Warner Hall still had enough space for an office-size typewriter, used then for writing papers.

September

August							September							October									
S	M	T	W	T	F	S	S	M	T	W	T	F	S	S	M	T	W	T	F	S			
					1	2	3	4					1					1	2	3	4	5	6
5	6	7	8	9	10	11	2	3	4	5	6	7	8	7	8	9	10	11	12	13	14	15	16
12	13	14	15	16	17	18	9	10	11	12	13	14	15	14	15	16	17	18	19	20	21	22	23
19	20	21	22	23	24	25	16	17	18	19	20	21	22	21	22	23	24	25	26	27	28	29	30
26	27	28	29	30	31		23	24	25	26	27	28	29	28	29	30	31						
							30																

3 MONDAY

8 SATURDAY

4 TUESDAY

Labor Day

9 SUNDAY

5 WEDNESDAY

6 THURSDAY

7 FRIDAY



GREG DREW

Most resident students today have their own computers and can access the library's electronic databases and other Internet resources through wired residence halls. They can carry their papers or homework on a "memory stick" to and from classes and laboratories.



Delaware Marching Band front shows its spirit.

September

<i>August</i>							<i>September</i>							<i>October</i>						
S	M	T	W	T	F	S	S	M	T	W	T	F	S	S	M	T	W	T	F	S
						1	2	3	4				1		1	2	3	4	5	6
5	6	7	8	9	10	11	2	3	4	5	6	7	8	7	8	9	10	11	12	13
12	13	14	15	16	17	18	9	10	11	12	13	14	15	14	15	16	17	18	19	20
19	20	21	22	23	24	25	16	17	18	19	20	21	22	21	22	23	24	25	26	27
26	27	28	29	30	31		23	24	25	26	27	28	29	28	29	30	31			
							30													

10 MONDAY

15 SATURDAY

11 TUESDAY

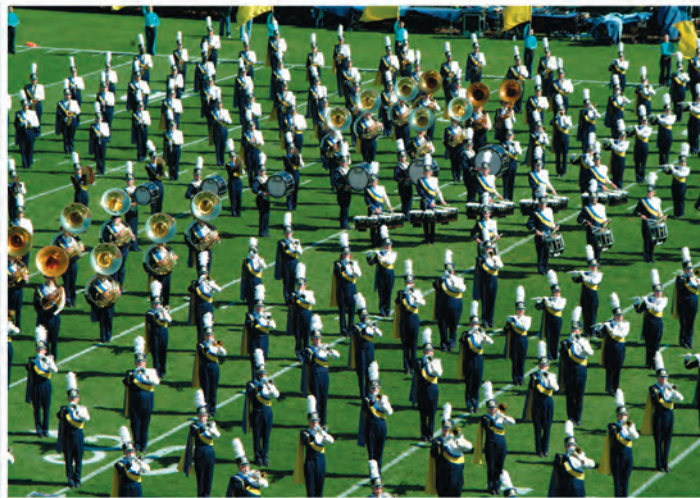
16 SUNDAY

12 WEDNESDAY

Ramadan begins at sundown.

13 THURSDAY

14 FRIDAY



GREG DREW

The University of Delaware Fightin' Blue Hen Marching Band is also known as "The Pride of Delaware."



September

<i>August</i>							<i>September</i>							<i>October</i>						
S	M	T	W	T	F	S	S	M	T	W	T	F	S	S	M	T	W	T	F	S
					1	2							1							1
5	6	7	8	9	10	11	2	3	4	5	6	7	8	7	8	9	10	11	12	13
12	13	14	15	16	17	18	9	10	11	12	13	14	15	14	15	16	17	18	19	20
19	20	21	22	23	24	25	16	17	18	19	20	21	22	21	22	23	24	25	26	27
26	27	28	29	30	31		23	24	25	26	27	28	29	28	29	30	31			
							30													

17 MONDAY

22 SATURDAY

18 TUESDAY

23 SUNDAY

19 WEDNESDAY

First day of autumn

20 THURSDAY

Rosh Hashanah begins at sundown.

21 FRIDAY

Yom Kippur begins at sundown.



ABOVE: An early photograph of The Green, taken shortly after the elms were planted, dates to 1924.

LEFT: The Green today is used for campus and community events, including Newark Community Day.



James Smith Hall

KATHY F. ATKINSON



Thomas McKean Hall



George Read Hall

TYLER JACOBSON



September

August							September							October											
S	M	T	W	T	F	S	S	M	T	W	T	F	S	S	M	T	W	T	F	S					
				1	2	3	4						1							1	2	3	4	5	6
5	6	7	8	9	10	11	2	3	4	5	6	7	8	7	8	9	10	11	12	13					
12	13	14	15	16	17	18	9	10	11	12	13	14	15	14	15	16	17	18	19	20					
19	20	21	22	23	24	25	16	17	18	19	20	21	22	21	22	23	24	25	26	27					
26	27	28	29	30	31		23	24	25	26	27	28	29	28	29	30	31								
							30																		

24 MONDAY

29 SATURDAY

25 TUESDAY

30 SUNDAY

26 WEDNESDAY

Sukkot begins at sundown.

27 THURSDAY

28 FRIDAY



DICK DURRANCE //

ABOVE: Built in the 1970s, Pencader Complex was a 12-unit motel-style residence hall with 3 common rooms. It housed 750 students.

LEFT: Three new buildings in a modern version of the Georgian style now replace the Pencader Complex. Thomas McKean Hall and James Smith Hall, each with 250 beds, opened in the fall of 2006. The 500-bed George Read Hall opened in August 2005.



A free-wheeling practice from the 1950s

October

<i>September</i>							<i>October</i>							<i>November</i>							
S	M	T	W	T	F	S	S	M	T	W	T	F	S	S	M	T	W	T	F	S	
						1	1	2	3	4	5	6							1	2	3
2	3	4	5	6	7	8	7	8	9	10	11	12	13	4	5	6	7	8	9	10	
9	10	11	12	13	14	15	14	15	16	17	18	19	20	11	12	13	14	15	16	17	
16	17	18	19	20	21	22	21	22	23	24	25	26	27	18	19	20	21	22	23	24	
23	24	25	26	27	28	29	28	29	30	31				25	26	27	28	29	30		

1 MONDAY

6 SATURDAY

2 TUESDAY

7 SUNDAY

3 WEDNESDAY

4 THURSDAY

5 FRIDAY



LANE MCLAUGHLIN

A free-wheeling practice from 2006



JASTAL BURGERS
EST. 1988

October

<i>September</i>							<i>October</i>							<i>November</i>							
S	M	T	W	T	F	S	S	M	T	W	T	F	S	S	M	T	W	T	F	S	
						1		1	2	3	4	5	6						1	2	3
2	3	4	5	6	7	8	7	8	9	10	11	12	13	4	5	6	7	8	9	10	
9	10	11	12	13	14	15	14	15	16	17	18	19	20	11	12	13	14	15	16	17	
16	17	18	19	20	21	22	21	22	23	24	25	26	27	18	19	20	21	22	23	24	
23	24	25	26	27	28	29	28	29	30	31				25	26	27	28	29	30		

8 MONDAY

13 SATURDAY

Columbus Day

Ramadan ends at sundown.

9 TUESDAY

14 SUNDAY

10 WEDNESDAY

11 THURSDAY

12 FRIDAY



RIGHT: Fraternity houses Sigma Nu (above) and Sigma Phi Epsilon (below) are now joined together as Jastek-Burgess Hall (LEFT), home to the Department of Foreign Languages and Literatures.



La Maison Française occupied the Jack Johnson house on South College Avenue from 1961-67. Then the house was leveled to make room for Smith Hall, which now occupies the corner of South College and Amstel Avenues. Its architecture is similar to the former fraternity house on Amstel Avenue, which dates from the same time.

October

September							October							November							
S	M	T	W	T	F	S	S	M	T	W	T	F	S	S	M	T	W	T	F	S	
						1		1	2	3	4	5	6						1	2	3
2	3	4	5	6	7	8	7	8	9	10	11	12	13	4	5	6	7	8	9	10	
9	10	11	12	13	14	15	14	15	16	17	18	19	20	11	12	13	14	15	16	17	
16	17	18	19	20	21	22	21	22	23	24	25	26	27	18	19	20	21	22	23	24	
23	24	25	26	27	28	29	28	29	30	31				25	26	27	28	29	30		

15 MONDAY

20 SATURDAY

16 TUESDAY

21 SUNDAY

17 WEDNESDAY

18 THURSDAY

19 FRIDAY



KATHY F. ATKINSON

Constructed in 1970, Smith Hall is named in memory of Edward Laurence Smith, dean of Delaware College from 1915-23. The building includes several large lecture halls and a portion of the computer center, along with faculty offices.



My, how you've grown! Today YoUDee stands 6 feet, 8 inches tall and wears 28FF sneakers, putting on quite a few pounds and inches since its early days as the University mascot, as seen here in 1931 with UD cheerleaders.

October

September							October							November							
S	M	T	W	T	F	S	S	M	T	W	T	F	S	S	M	T	W	T	F	S	
						1		1	2	3	4	5	6						1	2	3
2	3	4	5	6	7	8	7	8	9	10	11	12	13	4	5	6	7	8	9	10	
9	10	11	12	13	14	15	14	15	16	17	18	19	20	11	12	13	14	15	16	17	
16	17	18	19	20	21	22	21	22	23	24	25	26	27	18	19	20	21	22	23	24	
23	24	25	26	27	28	29	28	29	30	31				25	26	27	28	29	30		

22 MONDAY

27 SATURDAY

23 TUESDAY

28 SUNDAY

24 WEDNESDAY

Daylight-saving time ends.

25 THURSDAY

26 FRIDAY



KEVIN P. TUCKER

YoUDee and the cheerleaders lead the football team onto the field.

Fall break, classes suspended.



*This rear view of Old College showing its cupola dates from the early 1890s.
The tract of land in the foreground was first used as an experimental
farm and later was landscaped to become Frazer Field.*

October November

September							October							November								
S	M	T	W	T	F	S	S	M	T	W	T	F	S	S	M	T	W	T	F	S		
						1																
2	3	4	5	6	7	8	7	8	9	10	11	12	13	4	5	6	7	8	9	10		
9	10	11	12	13	14	15	14	15	16	17	18	19	20	11	12	13	14	15	16	17		
16	17	18	19	20	21	22	21	22	23	24	25	26	27	18	19	20	21	22	23	24		
23	24	25	26	27	28	29	28	29	30	31	25	26	27	28	29	30						

29 MONDAY

3 SATURDAY

30 TUESDAY

4 SUNDAY

31 WEDNESDAY

Halloween

1 THURSDAY

2 FRIDAY



KEVIN QUINLAN

Intramural sports such as flag football, soccer and softball are played on Frazer Field today.



November

October							November							December						
S	M	T	W	T	F	S	S	M	T	W	T	F	S	S	M	T	W	T	F	S
1	2	3	4	5	6					1	2	3								1
7	8	9	10	11	12	13	4	5	6	7	8	9	10	2	3	4	5	6	7	8
14	15	16	17	18	19	20	11	12	13	14	15	16	17	9	10	11	12	13	14	15
21	22	23	24	25	26	27	18	19	20	21	22	23	24	16	17	18	19	20	21	22
28	29	30	31				25	26	27	28	29	30		23	24	25	26	27	28	29
														30	31					

5 MONDAY

10 SATURDAY

6 TUESDAY

11 SUNDAY

Election Day

Veterans Day

7 WEDNESDAY

8 THURSDAY

9 FRIDAY



ABOVE: Pleated skirts, thick sweaters and Keds were what this well-dressed female cheerleader wore in 1956 when she practiced her routine in front of Memorial Hall.

LEFT: UD's cheerleading team consistently places among the top groups in national competition.



The UD Marching Band has grown from fewer than 100 members in 1994 to more than 300 members in 2006.

November

October							November							December						
S	M	T	W	T	F	S	S	M	T	W	T	F	S	S	M	T	W	T	F	S
	1	2	3	4	5	6				1	2	3								1
7	8	9	10	11	12	13	4	5	6	7	8	9	10	2	3	4	5	6	7	8
14	15	16	17	18	19	20	11	12	13	14	15	16	17	9	10	11	12	13	14	15
21	22	23	24	25	26	27	18	19	20	21	22	23	24	16	17	18	19	20	21	22
28	29	30	31				25	26	27	28	29	30		23	24	25	26	27	28	29
														30	31					

12 MONDAY

17 SATURDAY

13 TUESDAY

18 SUNDAY

14 WEDNESDAY

15 THURSDAY

16 FRIDAY



Delaware Stadium was built in 1952, and on its 50th anniversary, the playing field was named Tubby Raymond Field in honor of the man who coached the Fightin' Blue Hens for 36 of those years.



November

October							November							December						
S	M	T	W	T	F	S	S	M	T	W	T	F	S	S	M	T	W	T	F	S
	1	2	3	4	5	6				1	2	3							1	
7	8	9	10	11	12	13	4	5	6	7	8	9	10	2	3	4	5	6	7	8
14	15	16	17	18	19	20	11	12	13	14	15	16	17	9	10	11	12	13	14	15
21	22	23	24	25	26	27	18	19	20	21	22	23	24	16	17	18	19	20	21	22
28	29	30	31				25	26	27	28	29	30		23	24	25	26	27	28	29
														30	31					

19 MONDAY

24 SATURDAY

20 TUESDAY

25 SUNDAY

21 WEDNESDAY

Thanksgiving recess begins at 5 p.m.

22 THURSDAY

Thanksgiving Day

23 FRIDAY



ABOVE: In the 1970s, a single computer in the College of Engineering took up quite a bit of space.

LEFT: Racks of powerful Sun computers are used today in high performance computational biology at the Delaware Biotechnology Institute.



A weekly coffee hour was held in Brown Hall in 1945.

November December

October							November							December						
S	M	T	W	T	F	S	S	M	T	W	T	F	S	S	M	T	W	T	F	S
	1	2	3	4	5	6				1	2	3							1	
7	8	9	10	11	12	13	4	5	6	7	8	9	10	2	3	4	5	6	7	8
14	15	16	17	18	19	20	11	12	13	14	15	16	17	9	10	11	12	13	14	15
21	22	23	24	25	26	27	18	19	20	21	22	23	24	16	17	18	19	20	21	22
28	29	30	31				25	26	27	28	29	30	23	24	25	26	27	28	29	
													30	31						

26 MONDAY

1 SATURDAY

Classes resume after Thanksgiving recess.

27 TUESDAY

2 SUNDAY

28 WEDNESDAY

29 THURSDAY

30 FRIDAY



KATHY F. ATKINSON

A tug of war is held at the English Language Institute's annual picnic on the grounds of its West Main Street office in 2005.



December

November							December							January '08								
S	M	T	W	T	F	S	S	M	T	W	T	F	S	S	M	T	W	T	F	S		
					1	2	3						1					1	2	3	4	5
4	5	6	7	8	9	10	2	3	4	5	6	7	8	6	7	8	9	10	11	12		
11	12	13	14	15	16	17	9	10	11	12	13	14	15	13	14	15	16	17	18	19		
18	19	20	21	22	23	24	16	17	18	19	20	21	22	20	21	22	23	24	25	26		
25	26	27	28	29	30		23	24	25	26	27	28	29	27	28	29	30	31				
							30	31														

3 MONDAY

8 SATURDAY

4 TUESDAY

9 SUNDAY

Reading Day

Hanukkah begins at sundown.

Reading Day

5 WEDNESDAY

Last day of classes

6 THURSDAY

Reading Day

7 FRIDAY

Final exams begin.



FREDERICK MULLISON

ABOVE: The original Smith Hall overpass built in the 1980s allowed students to cross the increasingly busy South College Avenue.

LEFT: The overpass was given a new look in 1998 to complement the classic Georgian style of Gore Hall.



December

November							December							January '08								
S	M	T	W	T	F	S	S	M	T	W	T	F	S	S	M	T	W	T	F	S		
					1	2	3						1					1	2	3	4	5
4	5	6	7	8	9	10	2	3	4	5	6	7	8	6	7	8	9	10	11	12		
11	12	13	14	15	16	17	9	10	11	12	13	14	15	13	14	15	16	17	18	19		
18	19	20	21	22	23	24	16	17	18	19	20	21	22	20	21	22	23	24	25	26		
25	26	27	28	29	30		23	24	25	26	27	28	29	27	28	29	30	31				
							30	31														

10 MONDAY

15 SATURDAY

11 TUESDAY

16 SUNDAY

12 WEDNESDAY

13 THURSDAY

14 FRIDAY



ABOVE: Magnolia Circle was designed by landscape architect Marian Coffin as a transitional space between the former Women's College campus and the Delaware College campus.

LEFT: Refurbished in 2006, the circle now has a fountain and seating near the walkways that radiate out from the center.

Final exams end.



JON COX

December

November							December							January '08									
S	M	T	W	T	F	S	S	M	T	W	T	F	S	S	M	T	W	T	F	S			
						1	2	3						1					1	2	3	4	5
4	5	6	7	8	9	10	2	3	4	5	6	7	8	6	7	8	9	10	11	12			
11	12	13	14	15	16	17	9	10	11	12	13	14	15	13	14	15	16	17	18	19			
18	19	20	21	22	23	24	16	17	18	19	20	21	22	20	21	22	23	24	25	26			
25	26	27	28	29	30		23	24	25	26	27	28	29	27	28	29	30	31					
							30	31															

17 MONDAY

22 SATURDAY

18 TUESDAY

23 SUNDAY

First day of winter

19 WEDNESDAY

20 THURSDAY

21 FRIDAY



SARAH M. SIMON

ABOVE: During a study abroad trip to New Zealand in January 2005, Sarah Simon, AS '06, photographed the coastline.

LEFT: UD is known as the institution where study abroad originated, when eight young men traveled to Paris in 1923 for a year of study. The University's early program included study in Paris, Rome, Vienna, London and Geneva. Today more than 1,300 students participate in 60 different programs on all seven continents. The bottom photo is from a study abroad trip to Antarctica taken during Winter Session 2003.



December

<i>November</i>							<i>December</i>							<i>January '08</i>						
S	M	T	W	T	F	S	S	M	T	W	T	F	S	S	M	T	W	T	F	S
				1	2	3							1			1	2	3	4	5
4	5	6	7	8	9	10	2	3	4	5	6	7	8	6	7	8	9	10	11	12
11	12	13	14	15	16	17	9	10	11	12	13	14	15	13	14	15	16	17	18	19
18	19	20	21	22	23	24	16	17	18	19	20	21	22	20	21	22	23	24	25	26
25	26	27	28	29	30		23	24	25	26	27	28	29	27	28	29	30	31		
							30	31												

24 MONDAY

29 SATURDAY

25 TUESDAY

30 SUNDAY

Christmas

26 WEDNESDAY

Kwanzaa begins.

27 THURSDAY

28 FRIDAY



LANE MCLAUGHLIN

ABOVE: Laurel Hall, the home of Student Health Services located at the south end of The Green, was given in memory of Mary Wootten Carpenter by her husband, Walter S. Carpenter Jr., and his sons. The building is named in honor of Mrs. Carpenter's hometown, Laurel, Del.

LEFT: An earlier Laurel Hall without its cupola is shown after a December snow fall.



Old College is shown as it looked with the cupola, which was added in 1853 and removed in 1917.



DUANE PERRY

Several century-old linden trees near the Diamond Walkway were toppled by Hurricane Isabel in 2003.

December January '08

<i>December</i>							<i>January '08</i>							<i>February '08</i>								
S	M	T	W	T	F	S	S	M	T	W	T	F	S	S	M	T	W	T	F	S		
						1				1	2	3	4	5							1	2
2	3	4	5	6	7	8	6	7	8	9	10	11	12	3	4	5	6	7	8	9		
9	10	11	12	13	14	15	13	14	15	16	17	18	19	10	11	12	13	14	15	16		
16	17	18	19	20	21	22	20	21	22	23	24	25	26	17	18	19	20	21	22	23		
23	24	25	26	27	28	29	27	28	29	30	31	24	25	26	27	28	29					
30	31																					

31 MONDAY

5 SATURDAY

New Year's Eve

1 TUESDAY

6 SUNDAY

New Year's Day

2 WEDNESDAY

3 THURSDAY

Winter Session classes begin.

4 FRIDAY



KATHY F. ATKINSON

Old College today sports newly-planted white oak trees along the Diamond Walkway, which memorializes major donors to the University.

2008 Calendar

January

S	M	T	W	T	F	S
		1	2	3	4	5
6	7	8	9	10	11	12
13	14	15	16	17	18	19
20	21	22	23	24	25	26
27	28	29	30	31		

February

S	M	T	W	T	F	S
					1	2
3	4	5	6	7	8	9
10	11	12	13	14	15	16
17	18	19	20	21	22	23
24	25	26	27	28	29	

March

S	M	T	W	T	F	S
						1
2	3	4	5	6	7	8
9	10	11	12	13	14	15
16	17	18	19	20	21	22
23	24	25	26	27	28	29
30	31					

April

S	M	T	W	T	F	S
		1	2	3	4	5
6	7	8	9	10	11	12
13	14	15	16	17	18	19
20	21	22	23	24	25	26
27	28	29	30			

May

S	M	T	W	T	F	S
				1	2	3
4	5	6	7	8	9	10
11	12	13	14	15	16	17
18	19	20	21	22	23	24
25	26	27	28	29	30	31

June

S	M	T	W	T	F	S
1	2	3	4	5	6	7
8	9	10	11	12	13	14
15	16	17	18	19	20	21
22	23	24	25	26	27	28
29	30					

July

S	M	T	W	T	F	S
		1	2	3	4	5
6	7	8	9	10	11	12
13	14	15	16	17	18	19
20	21	22	23	24	25	26
27	28	29	30	31		

August

S	M	T	W	T	F	S
					1	2
3	4	5	6	7	8	9
10	11	12	13	14	15	16
17	18	19	20	21	22	23
24	25	26	27	28	29	30
31						

September

S	M	T	W	T	F	S
	1	2	3	4	5	6
7	8	9	10	11	12	13
14	15	16	17	18	19	20
21	22	23	24	25	26	27
28	29	30				

October

S	M	T	W	T	F	S
			1	2	3	4
5	6	7	8	9	10	11
12	13	14	15	16	17	18
19	20	21	22	23	24	25
26	27	28	29	30	31	

November

S	M	T	W	T	F	S
						1
2	3	4	5	6	7	8
9	10	11	12	13	14	15
16	17	18	19	20	21	22
23	24	25	26	27	28	29
30						

December

S	M	T	W	T	F	S
	1	2	3	4	5	6
7	8	9	10	11	12	13
14	15	16	17	18	19	20
21	22	23	24	25	26	27
28	29	30	31			

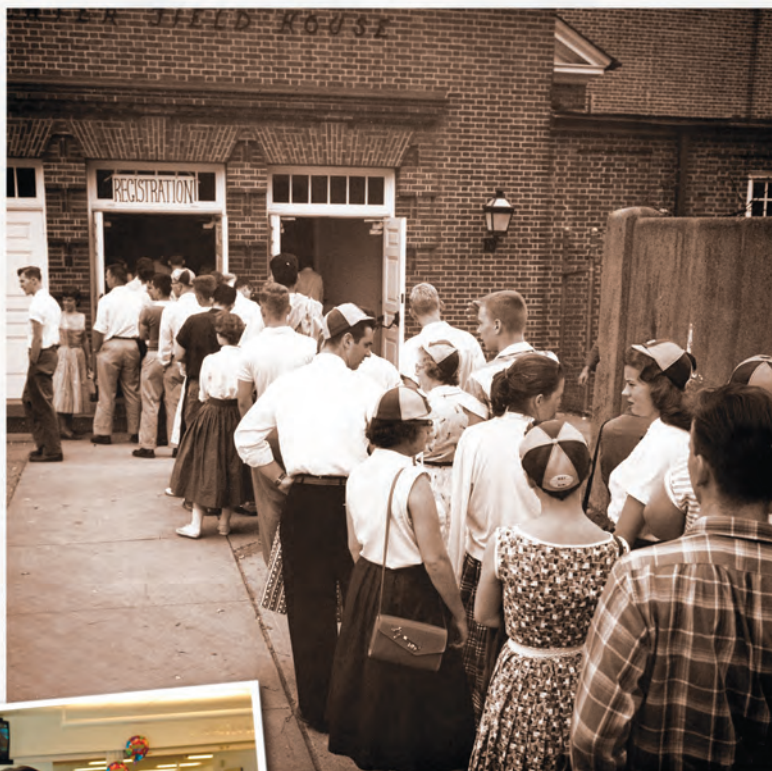
UNIVERSITY CONTACTS

UNIVERSITY OF DELAWARE, NEWARK, DELAWARE 19716

[WWW.UDEL.EDU]

Directory Assistance	302-831-2000	
TDD Service for Hearing & Speech Impaired	302-831-4059	
24-Hour Ticket and Event Information	UD1-HENS (302-831-4367)	
General Information	302-831-2792	www.udel.edu/PR
Sports Information Blue Hen 24-Hour Sports Line	302-831-8139	www.udel.edu/sportsinfo
Admissions, Graduate Studies	302-831-2129	www.udel.edu/gradoffice
Admissions, Undergraduate	302-831-8123 302-831-8125	www.udel.edu/admissions
Advisement Center	302-831-1281	www.udel.edu/advisement
Alumni & University Relations	302-831-8741	www.udel.edu/alumni
Archives	302-831-2750	www.udel.edu/Archives
Bob Carpenter Sports/Convocation Center	302-831-4016	www.udel.edu/BCC
College of Agriculture & Natural Resources	302-831-2501	http://ag.udel.edu
College of Arts & Sciences	302-831-2793	www.art-sci.udel.edu
Lerner College of Business & Economics	302-831-2551	www.be.udel.edu
College of Engineering	302-831-2401	www.engr.udel.edu
College of Health Sciences	302-831-2381	www.udel.edu/health
College of Human Services, Education & Public Policy	302-831-2394	www.udel.edu/chep
College of Marine and Earth Studies	302-831-2841	www.ocean.udel.edu
Courtyard Newark–University of Delaware	302-737-0900	www.udel.edu/hotel
Hartshorn Box Office	302-831-2204	www.PTTP.udel.edu
Ice Arena/Outdoor Pool	302-831-2868	www.udel.edu/icearena www.udel.edu/outdoorpool
Morris Library Information	302-831-2965	www.lib.udel.edu
Music at Delaware	302-831-2577	www.music.udel.edu/public/calendar.html
Office of Public Relations	302-831-2792	www.udel.edu/PR
Professional & Continuing Studies Newark Campus Downtown Center Wilmington Campus	302-831-2741 302-571-5239 302-573-4437	www.udel.edu/ce www.continuingstudies.udel.edu/UDDC
Trabant University Center Information	302-831-0616	www.udel.edu/student-centers
UDaily	302-831-2792	www.udel.edu/udaily
University Bookstore	302-831-2637	www.udel.edu/bookstore
University Development /Annual Giving	302-831-2104	www.udel.edu/Development
Visitors Center	302-831-1557	www.udel.edu/admissions/viewbook/visit
Vita Nova	302-831-0500	www.hrim.udel.edu/vitanova

THE UNIVERSITY OF DELAWARE HAS
GROWN FROM ITS FOUNDING AS A
SMALL PRIVATE ACADEMY IN 1743
TO A MAJOR UNIVERSITY.



Historical photos documenting many aspects of the University were provided courtesy of UD Archives and current photos were taken by staff, student and freelance photographers.



KATHY E. ATKINSON

Printed by Graphic
Communications Center
University of Delaware
Photos courtesy of UD Archives
and Public Relations



Copyright ©2006 by the University of Delaware
www.udel.edu

Designed by Lane McLaughlin
Creative Services Group,
Editor: Cornelia Weil
Office of Public Relations
University of Delaware